



SMART START

Achievements of CRC-REP



 Australian Government
Department of Industry,
Innovation and Science

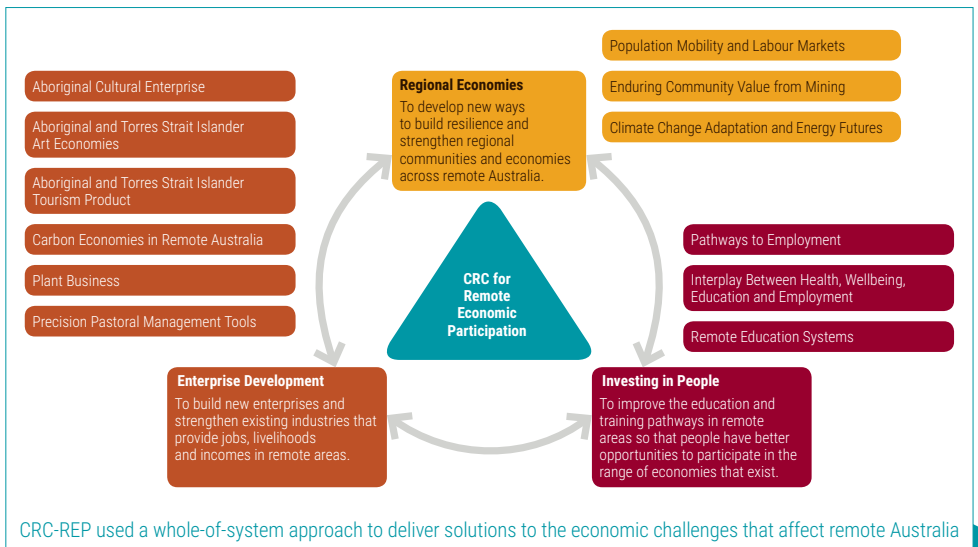
Business
Cooperative Research
Centres Programme

NINTI  **REMOTE**
ONE  **ECONOMIC**
PARTICIPATION

CRC-REP's education program has resulted in the graduation of **36 STUDENTS** to date, with **ALL HONOURS STUDENTS** completed with First Class Honours degrees

INTRODUCTION

The CRC-REP delivered significant economic and social benefits to remote Australia. It developed a unique collaborative research program to systematically investigate and provide practical responses to the complex social, economic, health and education issues that affect economic participation, particularly with respect to Aboriginal and Torres Strait Islander peoples living in remote areas.



The estimated cost savings for government through more accurate allocation of funding is at least **\$62.7 MILLION** annually

OUR IMPACTS

Through co-designed, genuinely participatory on-ground research with end-user partners, the CRC-REP has delivered significant impact by providing relevant, timely and actionable advice and practical solutions to policymakers, businesses, community organisations and industry stakeholders working in or with remote communities.

As a mainly public good CRC, we continuously sought new and innovative ways to communicate our research outcomes to maximise the uptake of our work by end users. To ensure uptake at the policy level, we proactively engaged with relevant government departments and parliamentary offices and made regular public submissions to government inquiries.



Photo: Damien Jacobsen

KEY RESEARCH OUTPUTS

The following section contains a selection of key research outputs by the CRC-REP's three research programs: Regional Economies, Enterprise Development and Investing in People.

Over the life of CRC-REP,
we collaborated with

135 SMEs



Photo: Tim Ackler

REGIONAL ECONOMIES RESEARCH PROGRAM

- We built an evidence base on population mobility and barriers to mobility in remote Aboriginal and Torres Strait Islander communities.¹
- We produced a population modelling tool for remote communities and established that very remote communities are actually growing rapidly. This improved basis for enumerating Aboriginal people in remote areas can enable more accurate allocation of government funding.
- We developed an Input–Output model of remote Australia, which can help remote people and local and state governments transition to alternative futures as reductions in the mining labour force continue to affect regional and remote communities.
- We produced a Remote Community Mining Toolkit designed to enable communities to prepare and plan for the social, cultural and economic impacts of major resource developments, from start-up through to closure stages.
- We built an evidence base on the socio-economic impacts of long distance commuting (LDC) on source communities.²
- We developed strategies and advice for community-based enterprises to improve energy management in enterprise buildings and reducing costs for businesses.³



Photo: Tim Acker

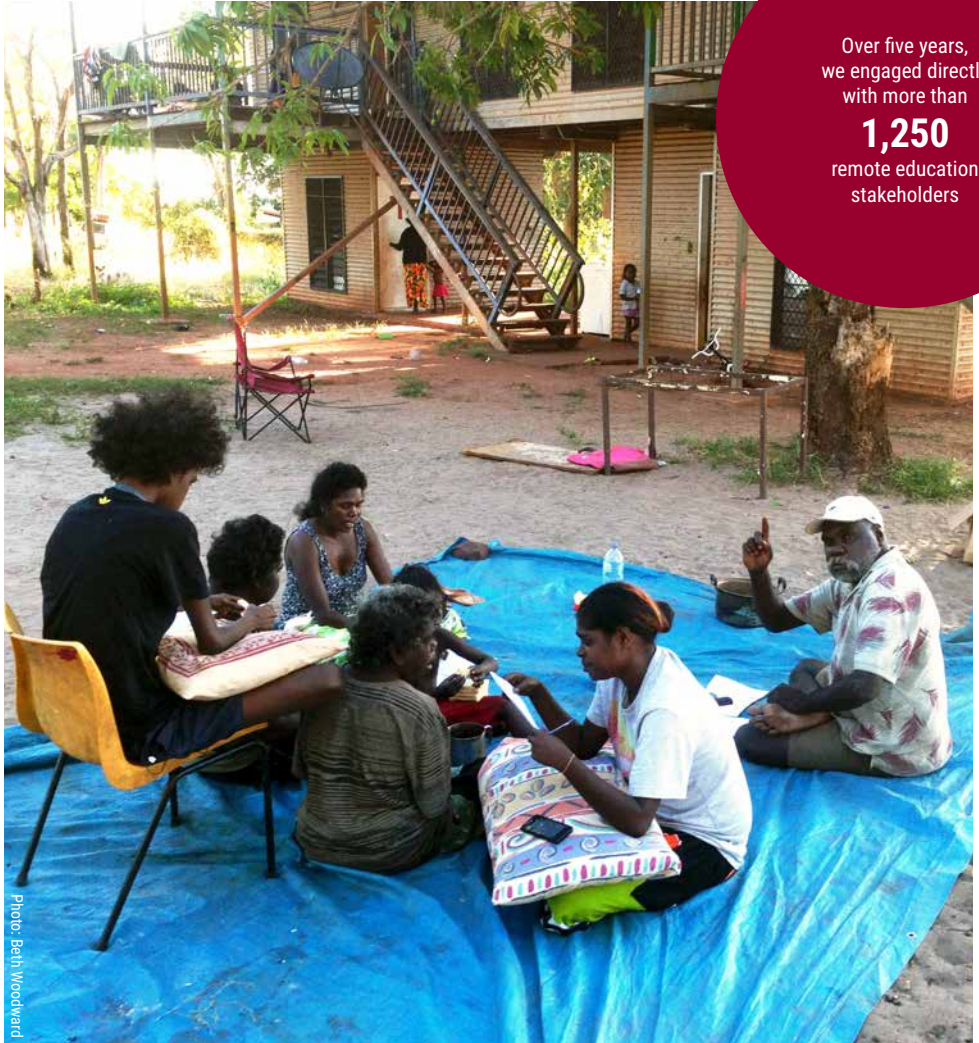
We conducted the
**LARGEST
EVER SURVEY**
of Aboriginal and
Torres Strait Islander
mobility

ENTERPRISE DEVELOPMENT RESEARCH PROGRAM

- We built an evidence base about the Aboriginal and Torres Strait Islander art sector with the first national analysis on the production and sale of Aboriginal art, in particular from remote art centres.⁵
- We developed new tools to aid financial management and marketing of Aboriginal art for remote art centres.⁶
- We developed 10 principles of enterprise clustering to help Aboriginal and Torres Strait Islander tourism enterprises develop and benefit from culturally appropriate clusters.⁷
- We developed policy recommendations to support and safeguard the interests of Aboriginal and Torres Strait Islander peoples in the commercialisation of their bush foods through the identification of possible legal and institutional interventions.⁸
- We identified improved bush tomato varieties as a model for bush food crop development and protection of the intellectual property of Aboriginal and Torres Strait Islander peoples.⁹
- We developed the Precision Pastoral Management System (PPMS) software that allows pastoralists to integrate precision animal data with precision spatial data to match livestock performance to environmental conditions, leading to more efficient and profitable pastoral enterprises.¹⁰
- We produced a database of sacred sites which is providing a very effective vehicle for the Pila Nguru community to store, build on and manage cultural information relating to the Spinifex Native Title Area.¹¹

INVESTING IN PEOPLE RESEARCH PROGRAM

- We developed and validated the Interplay Wellbeing Framework to measure the interplay between culture, community, empowerment, education, employment, health and wellbeing in remote Aboriginal communities and to evaluate the impact of interventions and inform policy in these areas.¹⁶
- We documented Aboriginal job seekers' perspectives about effective supports for successful employment transitions.¹⁷
- We built an evidence base about how to improve remote Aboriginal and Torres Strait Islander vocational education, training and employment outcomes.¹⁸
- Based on our findings about the purpose of education from Aboriginal and Torres Strait Islander perspectives, we developed strategies and recommendations to improve the remote education system.¹⁹



Over five years,
we engaged directly
with more than

1,250

remote education
stakeholders



Photo: John Guenther

We produced
OVER 523
 end-user publications

PARTICIPANTS OF CRC-REP



**For more information contact
Rod Reeve, Managing Director: rod.reeve@nintione.com.au**